

# RadChem *Info*

TRU Resin

Agenda

N°8 • April 2007

## EICHROM ENVIRONMENT



### **Eichrom Environment SAS**

Campus de Ker Lann • Parc de Lormandière, Bât. C,  
Rue Maryse Bastié • 35170 Bruz – France

Tel. : +33 (0)2 99 05 00 09 • Fax : +33 (0)2 99 05 07 27  
e-mail : [contact@e-environment.fr](mailto:contact@e-environment.fr)

## Editorial

2007 is a year of change and novelty. We are glad to announce the creation of

### **EICHROM ENVIRONMENT SAS**

Recently resulting from a structural change between Eichrom Technologies in the United States and Eichrom Europe in France, EICHROM ENVIRONMENT goes on focusing on customers needs as well as on the environment monitoring and analysis market.

EICHROM ENVIRONMENT remains dedicated to resins sales and technology development, and produces from now on locally its own EICHROM resins range.

The Management Team of EICHROM ENVIRONMENT is fully committed to satisfy its customers' quality expectations and to develop R&D partnerships.

Your Radchem contacts in Eichrom Environment remain the same as the ones you were having in Eichrom Europe. You will find our complete team on the last page of this letter.

The technical part of this issue is dedicated to the characteristics and properties of TRU Resin. This is the last of the four main Eichrom Resins. Starting in the next RadChem Info issue, we'll go on with the Eichrom Resins that are less known as LN Resin, NI Resin,...

**Aude Bombard**  
*Product Manager*

*Eichrom Environment*



*Document édité et imprimé  
sur du papier recyclé.*

## EICHROM ENVIRONMENT

# Resins

## TRU Resin

TRU Resin characteristics and properties are given by the synergistic combination of CMPO (octylphenyl-N,N-di-isobutyl carbamoyl phosphine oxide) extractant diluted in TBP (fig. 1). TRU Resin is used for the extraction and separation of Transuranian elements, including americium, contrarily to TEVA or UTEVA Resins.

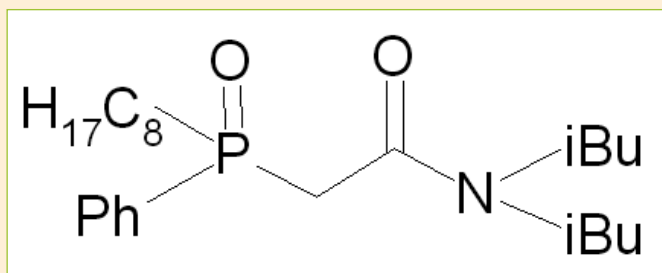
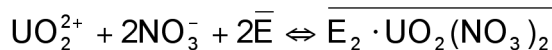
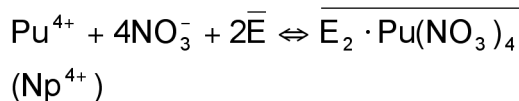
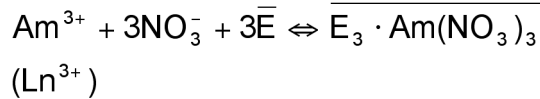


Figure 1 : CMPO.

Assumed extraction equilibria :



Where E = extractant

V <sub>m</sub> (mobile phase)	0.68 mL/mL resin
V <sub>s</sub> (stationary phase)	0.152 mL/mL resin
Resin density	0.37 g/mL resin
Experimental capacity	2 mg Am/ mL resin

Table 1 : Data on TRU Resin<sup>(1)</sup>.

Figure 5 shows the elution profiles of the different radionuclides in HNO<sub>3</sub> and HCl media. Transuranian elements have a high affinity for the resin for increasing HNO<sub>3</sub> concentration. Americium also shows a good affinity for the resin :  $k'_{(\text{Am}) \text{ max}} \sim 100$  for a concentration in HNO<sub>3</sub> from 1 - 3M. Np(V) is not retained on the TRU Resin at high HNO<sub>3</sub> concentrations whereas Np(IV) is very well fixed in the same conditions. This different behaviour between the two oxydation states of Np allows the separation of this element from other actinides. Fe(III) shows no affinity for the resin for the acidity range of 0.05 - 2M HNO<sub>3</sub>. Above 2M HNO<sub>3</sub>,

Fe(III) affinity is increasing with the HNO<sub>3</sub> concentration. TRU Resin properties towards Fe can be used for the separation and measurement of Fe-55 (cf Eichrom method FEW01). Fe(III) is fixed on the resin at 8M HNO<sub>3</sub> and eluted either with 1-2M HNO<sub>3</sub> solution.

In HCl media, Am(III) is not retained on TRU Resin. Pu(IV), Np(IV), Th(IV) and U(VI) show very high affinity for HCl concentrations TRU higher than 3M. Affinity of

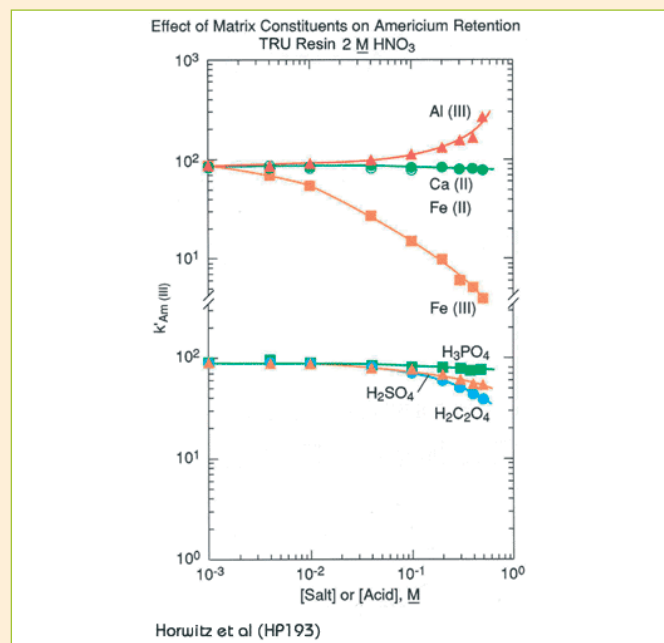


Figure 2 : Matrix effects on Am(III) retention<sup>(1)</sup>.

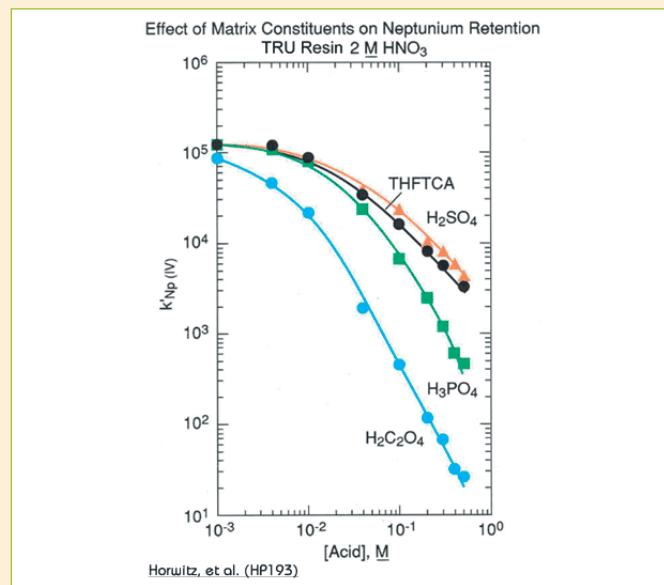


Figure 3 : Matrix effects on Np(IV) retention<sup>(1)</sup>.

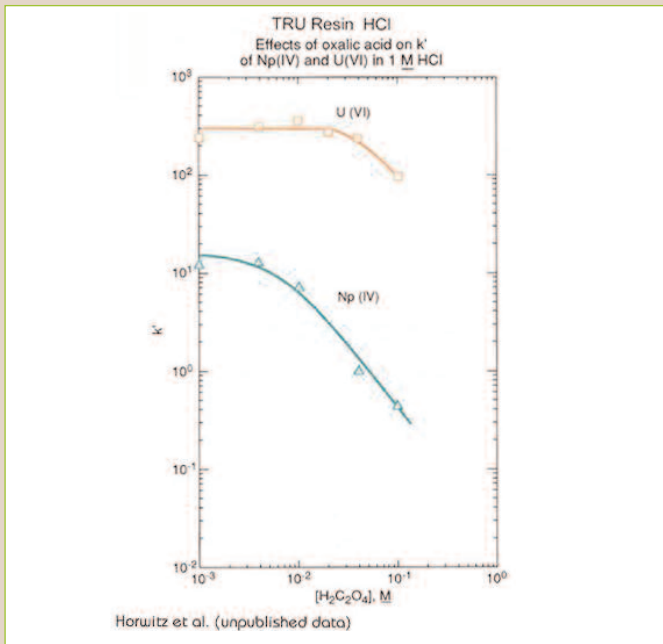


Figure 4 : Oxalic acid interference on the uptake of Np(IV) and U(VI) <sup>(1)</sup>.

these elements for the resin is decreasing with decreasing HCl concentration.

Phosphates, sulfates and oxalic acid start slightly interfering Am uptake when their concentration is greater than 0.1M (figure 2). The same salts do interfere strongly the uptake of Np(IV), especially oxalate salt.

However,  $k'_{Np(IV)}$  remains greater than 1000 for salt concentrations less than 0.05M for oxalates and 0.3M for sulfates (figure 3).

Figure 2 shows that calcium and Fe(II) do not interfere Am retention. However, a concentration of Fe(III) greater than  $10^{-3}M$  in 2M  $HNO_3$  prevents any uptake of Am. On the contrary, the presence of more than 0.1M aluminum enhances Am(III) uptake.

In 1M HCl medium, Np(IV) shows no affinity for TRU Resin. The use of oxalic acid in concentration higher than  $10^{-2}M$  in 1M HCl, makes the Np(IV) elution faster. In the same acidic medium, U(VI) remains on the resin up until the oxalic acid concentration reaches 0.05M (figure 4).

Eichrom methods using TRU Resin are ACU02, ACW03, ACW04, ACW03VBS, ACW16 VBS and FEW01. Associated bibliography is available on the <http://www.eichrom.com/> website (follow "Radiochemistry" then "Bibliography").

### Bibliography

- (1) Horwitz P., Chiarizia R. Dietz M., Diamond H., Nelson, D. ; *Analytica Chimica Acta*, **281**, pp. 361-372 (1993); Eichrom reference HP193.

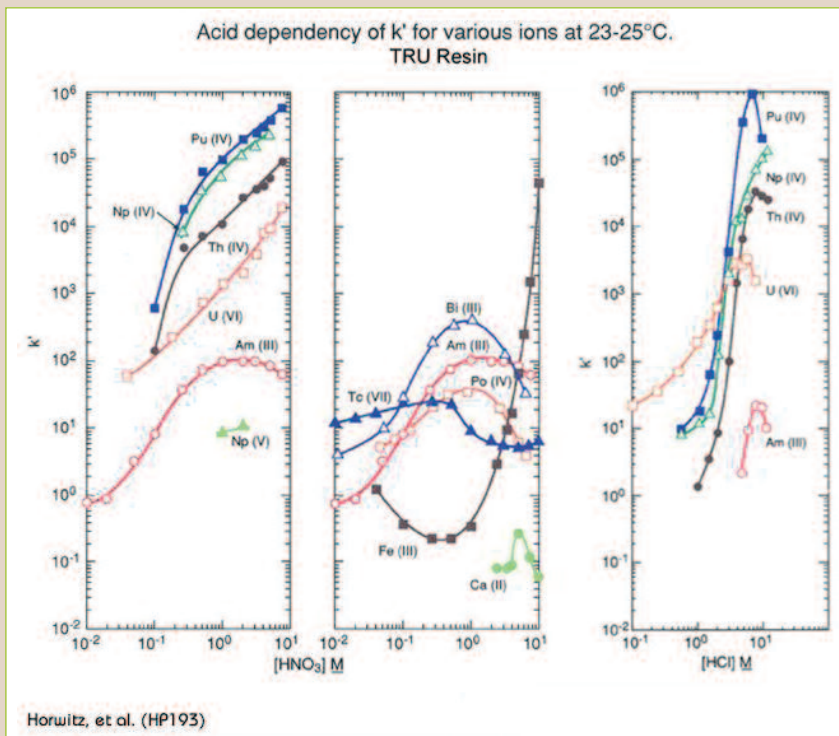


Figure 5 : Elution profiles of different elements in  $HNO_3$  and HCl media on TRU Resin <sup>(1)</sup>.

Do not hesitate to contact us for more details



# Agenda

Eichrom Environment team is composed of the 6 following persons, who were already your contacts in Eichrom Europe :



■ **Michaela Langer**  
Chairwoman  
[mlanger@e-environment.fr](mailto:mlanger@e-environment.fr)



■ **Céline Vignaud**  
Administrative and finance manager  
[cvignaud@e-environment.fr](mailto:cvignaud@e-environment.fr)



■ **Anne-Hélène Le Moing**  
Quotations/orders/expeditions  
[alemoing@e-environment.fr](mailto:alemoing@e-environment.fr)



■ **Anne Raoult**  
Quality manager  
[araoult@e-environment.fr](mailto:araoult@e-environment.fr)



■ **Steffen Happel**  
R&D/Technical support/production  
[shappel@e-environment.fr](mailto:shappel@e-environment.fr)



■ **Aude Bombard**  
Technical support/production  
[abombard@e-environment.fr](mailto:abombard@e-environment.fr)

You also may address your request and demands to [contact@e-environment.fr](mailto:contact@e-environment.fr)